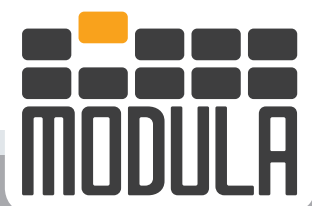




Modula ONEPICK

Think Vertical, Think Modula



modula.com

Modula ONEPICK

Are you looking
for more from
a vertical
warehouse?

Top level automation

OnePick is the Vertical Lift Module that works without an operator because its bay is completely automatic!

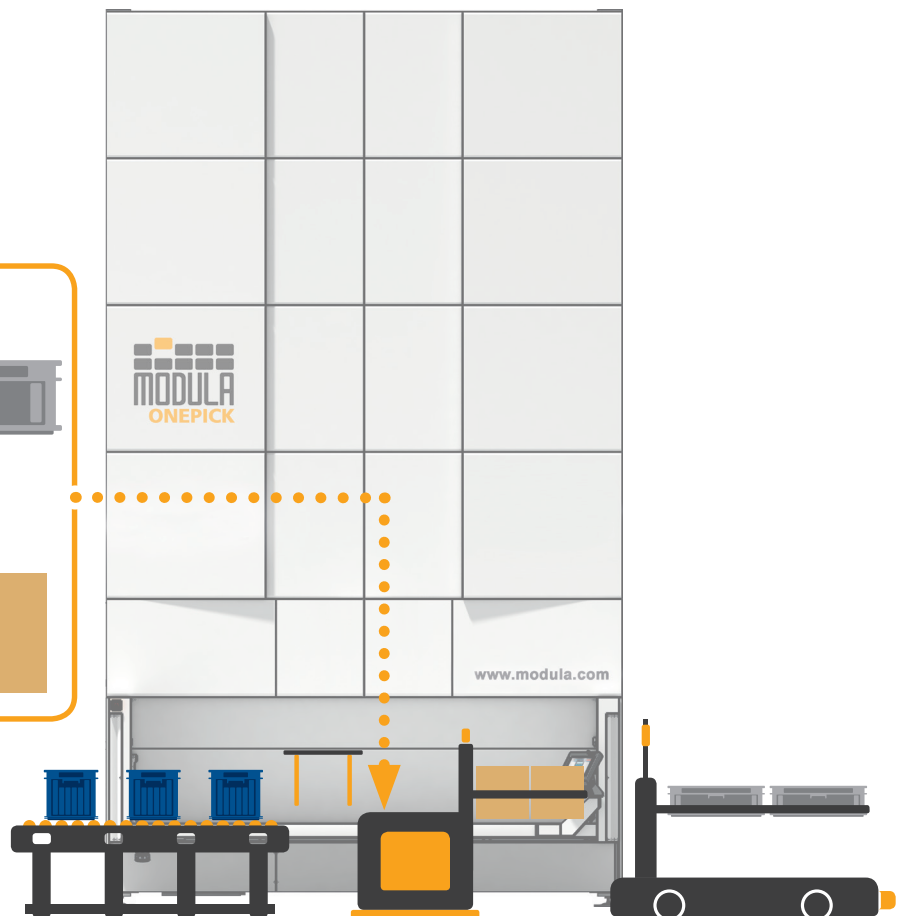
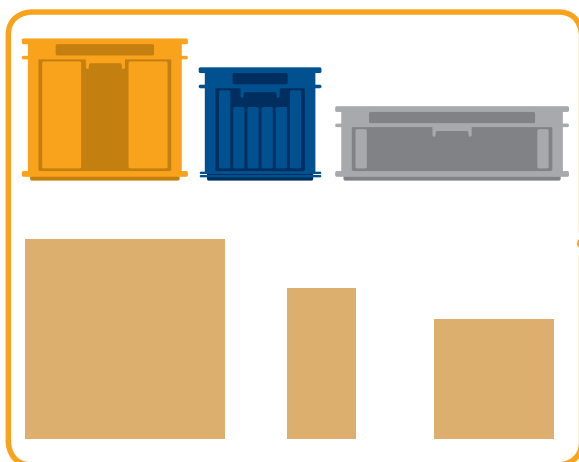
OnePick integrates seamlessly with material handling systems like conveyor belts, rollers, AGVs, AGCs and others.

With OnePick, picking is fully automatic and safe.

Thanks to its specially designed gripper it handles the products stored in boxes or bins without the need of operators, antropomorphic robots or other external handling systems.

OnePick is the ideal system for stocking in the same warehouse boxes, bins and containers with:

- Different weights
- Different volumes
- Different sizes
- Different dimensions



What it is and how it works

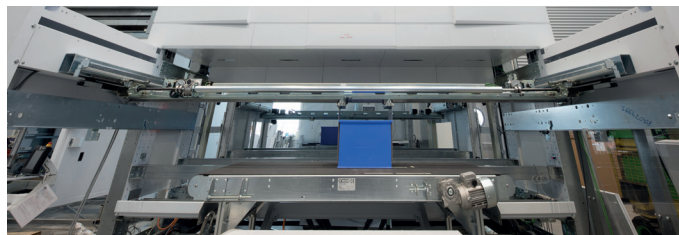
OnePick is a Modula Lift (VLM) with a special picking bay equipped with a cartesian robot moving on 2 axes (X and Y).

The bay has a set unit height so it integrates seamlessly and automatically with rollers, conveyors, belts and other systems.

In the OnePick bay, a grip device retrieves the box and places it in front of the unit on an external surface.

Like a Modula Lift, it

- Saves floor space
- Stores items safely
- Automatically manages inventory
- Tracks items
- Saves picking time
- Prevents retrieval and delivery phase errors



Technical features

Unit height:
from 3.300 mm to 16.100 mm

Unit height increment:
200 mm

Tray storage pitch:
25 mm

Tray width:
from 1.900 mm to 4.100 mm

Tray depths:
654 mm & 857 mm

Net tray payload:
250-500-750-990 kg

Total net payload:
up to 90.000 Kg

Number of bays:
up to 3 OnePick, also on the same side and displaced

Load-bearing structure in zinc-coated steel
Eagle steel-reinforced toothed belt transmission
Elevator guiding system with 6 HDPE rollers per side
Multiple payload tray management

Maximum load unit height:
360 mm

Maximum load unit weight:
25 kg (depending on the box dimensions)

Option for opposed bays

Dynamic tray height storage

Retrofit possible on existing
Modula Lifts (New Generation)

Modula ONEPICK

Unspectated
spaces!

Retrieval from multiple rows

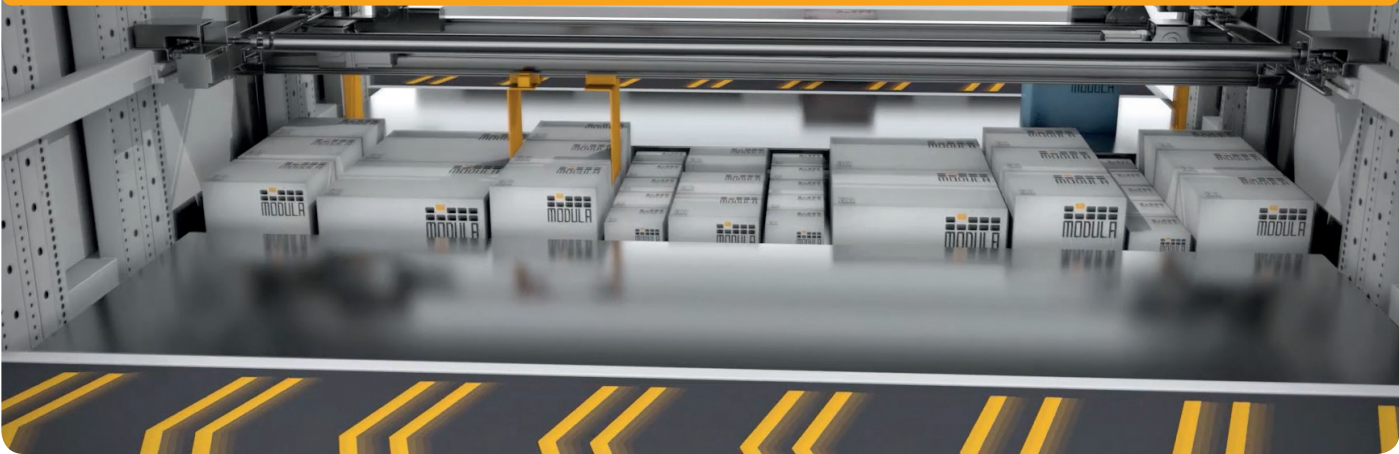
The OnePick warehouse retrieves from multiple rows in the same tray.

An advanced system synchronizes the grip device and the tray movements.

This makes box retrieval extremely precise, even when the tray has a random geometric layout and/or on more than one row.

No matter what the tray layout is, it is perfectly reachable. OnePick technology translates into tray space optimisation, the entire surface is used, even when the boxes have different geometry, volumes or shapes. There is more: thanks to the Modula warehouse dynamic tray height storage, the spaces between trays can be optimised and boxes and containers of different unit heights can be stored with great flexibility and efficiency.

Zero error, no waste - maximum efficiency.



Never seen such flexibility!

OnePick trays are fitted with special accessories, like partitions and dividers to organise the trays to store a number of different boxes and containers.

Thanks to these accessories, the tray layout is incredibly flexible and easy to modify.

The dynamic tray height storage combined with 25 mm tray adjustability allows for an optimised usage of the VLM internal volume.

At every material intake, the VLM controls the height of the material, checks the available spaces inside the warehouse and selects the perfect storage location in order to minimize the internal space waste.

No more useless gaps between the stored trays!



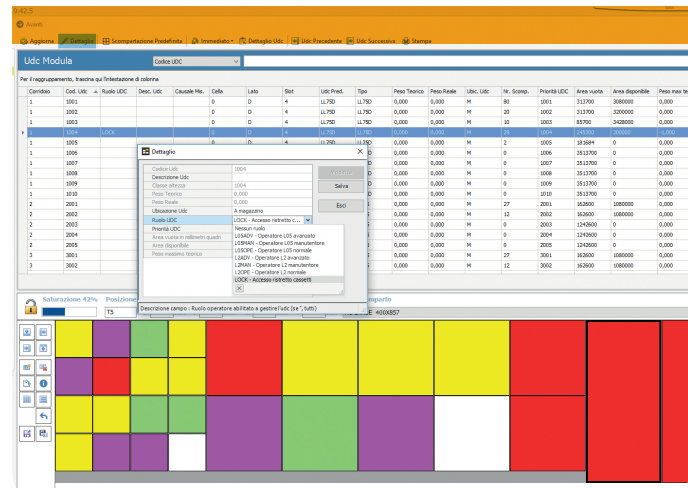
Picking
wherever
you want!

A smart software

The OnePick combined with a handling system allows the installation of a VLM even in hard to reach, awkward areas, or areas a long way from the station where the items are needed.

OnePick requires Modula WMS software which, among other functions, maps the containers position in the tray. The grip device is guided by the defined mapping and retrieves fully automatically the required items.

Any material handling system is then able to carry them to another even remote station. Ideal for assembly lines, work islands, but also pick and pay, indabox or pick-up applications for e-commerce, self service or take away, automatic stores.



MA & MA-D



Model	Tray width (mm)	Tray depth (mm)	Tray wall height (mm)	Net tray payload (kg)	Unit footprint (Width x Depth) (mm)
MA25	1.900	654	45 / 70 / 120	250	2.317x3.472
MA25D	1.900	857	45 / 70 / 120	250	2.317x4.284
MA50	1.900	654	70 / 120	500	2.317x3.472
MA50D	1.900	857	70 / 120	500	2.317x4.284
MA75	1.900	654	70 / 120	750	2.317x3.472
MA75D	1.900	857	70 / 120	750	2.317x4.284
MA1000	1.860	654	120	990	2.317x3.472
MA1000D	1.860	857	120	990	2.317x4.284

MC & MC-D



Model	Tray width (mm)	Tray depth (mm)	Tray wall height (mm)	Net tray payload (kg)	Unit footprint (Width x Depth) (mm)
MC25	2.500	654	45 / 70 / 120	250	2.917x3.472
MC25D	2.500	857	45 / 70 / 120	250	2.917x4.284
MC50	2.500	654	70 / 120	500	2.917x3.472
MC50D	2.500	857	70 / 120	500	2.917x4.284
MC75	2.500	654	70 / 120	750	2.917x3.472
MC75D	2.500	857	70 / 120	750	2.917x4.284
MC1000	2.460	654	120	990	2.917x3.472
MC1000D	2.460	857	120	990	2.917x4.284

MX & MX-D



Model	Tray width (mm)	Tray depth (mm)	Tray wall height (mm)	Net tray payload (kg)	Unit footprint (Width x Depth) (mm)
MX25	3.100	654	45 / 70 / 120	250	3.517x3.472
MX25D	3.100	857	45 / 70 / 120	250	3.517x4.284
MX50	3.100	654	70 / 120	500	3.517x3.472
MX50D	3.100	857	70 / 120	500	3.517x4.284
MX75	3.100	654	70 / 120	750	3.517x3.472
MX75D	3.100	857	120	750	3.517x4.284
MX1000	3.060	654	120	990	3.517x3.472
MX1000D	3.060	857	120	990	3.517x4.284

ML & ML-D



Model	Tray width (mm)	Tray depth (mm)	Tray wall height (mm)	Net tray payload (kg)	Unit footprint (Width x Depth) (mm)
ML25	4.100	654	70 / 120	250	4.517x3.472
ML25D	4.100	857	70 / 120	250	4.517x4.284
ML50	4.100	654	120	500	4.517x3.472
ML50D	4.100	857	120	500	4.517x4.284
ML75	4.100	654	120	750	4.517x3.472
ML75D	4.100	857	120	750	4.517x4.284
ML1000	4.060	654	145	990	4.517x3.472
ML1000D	4.060	857	145	990	4.517x4.284

Modula Worldwide presence



ONEPICK

Modula is present in 5 continents with dealers and branches located in over 50 countries.

MODULA ITALIAN HEADQUARTER

Via San Lorenzo 41
41042 Salvaterra di Reggio Emilia
Italy
infoweb@modula.com
www.modula.com

www.modula.com

All information provided on this catalogue is for informative purposes only and is not binding. Modula reserves the right to change information on this catalogue at any time. Modula will not accept liability for or guarantee the accuracy of the information contained herein.