



Pushback Rack





PUSHBACK RACK

A DYNAMIC HIGH DENSITY STORAGE SOLUTION

By using pushback rack systems, you can double or triple your storage capacity when compared to standard pallet rack or double deep racking systems.

WHY A PUSHBACK SOLUTION?

When the average number of pallets per product exceeds five, a pushback solution is justified. The higher the number the deeper the lane, and the easier it is to achieve FIFO rotation.

- Increased density
- 85-95% occupancy
- FIFO stock rotation
- Low handling costs
- Random storage on all levels
- Low product and rack damage
- Efficient bottom level case picking
- System flexibility

Pushback pallet racking systems are installed in a wide variety of industry types including:

- Food & Beverage Distribution
- Manufacturing
- Third Party Logistics Facilities
- Automotive
- Pharmaceuticals

HOW DOES PUSHBACK WORK?

A pushback lane consists of nested, rolling carts sitting on top of a pair of inclined rails. The first pallet loaded from the front sits on the top cart. When the second pallet is loaded, it pushes the first pallet back one position. This process repeats for up to six pallets deep.

To remove a pallet from a pushback rack, the fork truck driver lifts the pallet off, reverses slowly and the next pallet comes forward and into the front position. This operation is repeated until the lane is empty.

TYPES OF PUSHBACK



LOW PROFILE CARTS

This nesting cart design has a lower stacked height than typical industry alternatives that use rough C channel or I-beam rails. This allows for extra lift off clearance, requires lower pushing forces by lifting equipment, and may even allow for an extra storage level over other cart styles.

Like all carts from this manufacturer, the carts come supplied with solid steel wheels already mounted, decreasing installation time.



LADDER PROFILE CARTS

Designed to accommodate weak, odd shaped, or special loads (like plastic pod pallets), ladder profile carts provide additional pallet support. These carts can have additional left to right or front to back supports and incorporate wire mesh, bar grating or solid steel sheet.

The last pallet position can have either a third rail or a complete shelf to support the last pallet in the lane.



DOUBLE STACK ON FLOOR

Allows for more compact storage height with greater density. If pallets can be double stacked at the floor level, the storage cost per pallet position is substantially reduced.

By double stacking on the floor, 2 cart levels can be eliminated, potentially gaining incremental storage height of 12 to 30 inches.

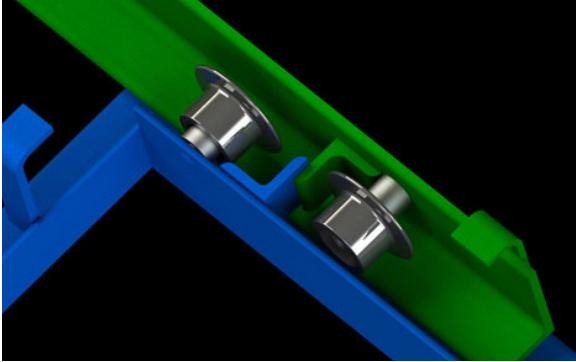


FLOOR MOUNTED PUSHBACK

Floor Mounted systems are utilized for picking from the bottom level of Push Back Racking.

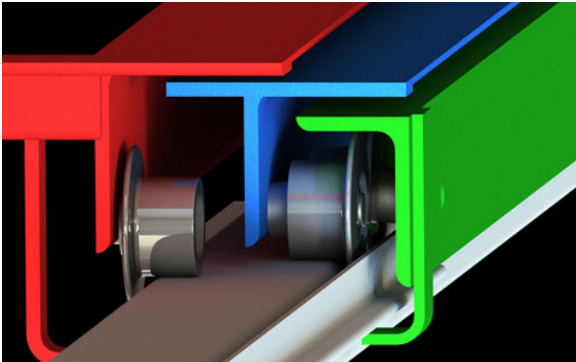
Floor mounting reduces the starting height of the Push Back system thus eliminating beams in the first few positions (usually 3). The first beam level, usually 8 to 10 inches high, is reduced to 3 inches, resulting in a 5 inch overall height savings.

FEATURES AND BENEFITS



Linked Carts

- Carts linked when extended
- Eliminates single pallet hang-ups
- Important safety feature no system should be without



Welded Shafts and Machined Steel Wheels

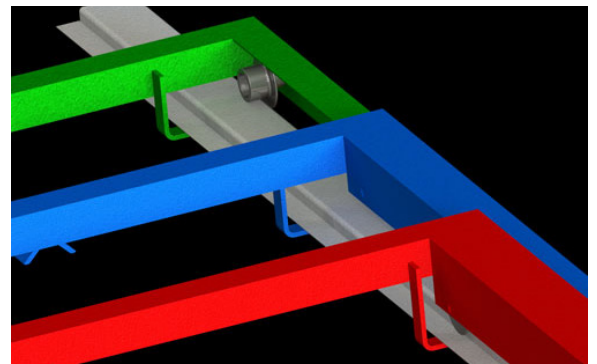
- Manufactured from solid steel
- Equipped with heavy duty precision bearings
- Oversized to withstand shock loading
- Capacities of up to 1,400 lbs. per wheel
- Welded steel shafts

HOW DEEP CAN YOUR PUSHBACK RACKING GO?

We offer 2, 3, 4, 5, & 6 deep pushback for our standard low profile push back designs and for our heavy duty designs. For our special ladder style and full support/mesh covered designs we can go up to 5 deep.

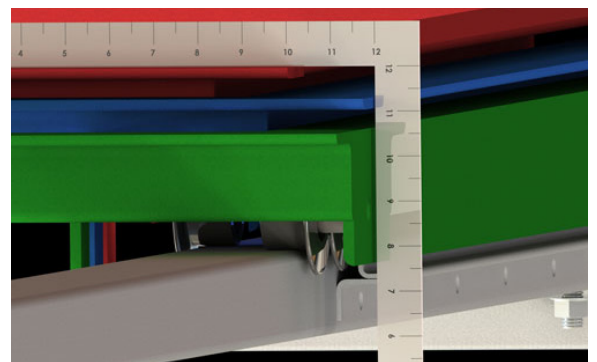
Lift-out Protectors

- Built-in safety feature
- Prevents accidental dislodgement
- Structural steel construction



Low Profile Design

- Lower profile than most of our competitors
- Extra lift clearance
- Enables possibility of extra level

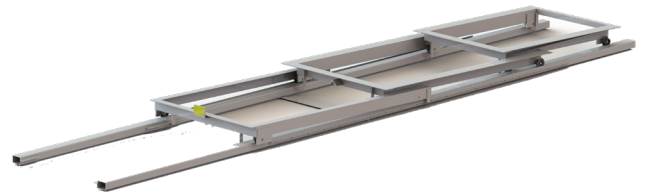


CART AND MOUNTING OPTIONS



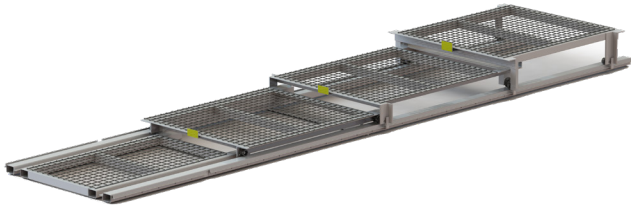
Inclined Cart - U-Shaped (standard)

- Low profile design
- Low cart cost
- Pallets must be of good quality with strong support (CHEP)



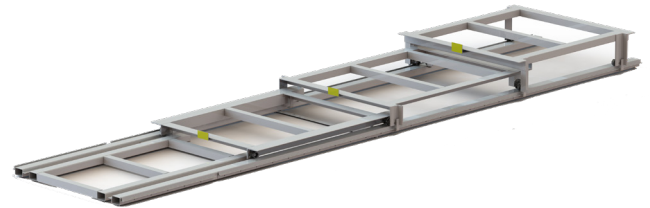
Level Cart - U-Shaped

- Commonly used with high pallets where stability is essential. Center of gravity remains in the middle of the pallets
- Ideal for liquid products, tall produce pallets



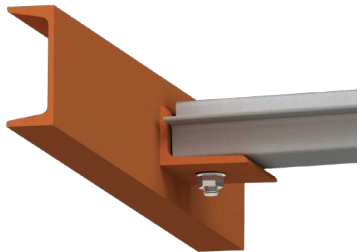
Level Cart - Ladder Closed

- Designed with extra support in the middle and covered with mesh or a steel plate
- Can accommodate pallets with poor bottom support
- Commonly used with 9 pod pallets or stacking bins



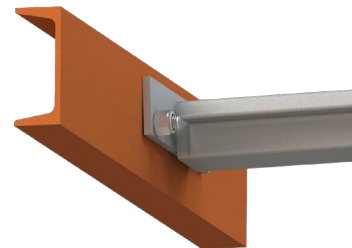
Level Cart - Ladder

- Designed with extra support in the middle to accommodate pallets lacking structure underneath and that require support on all 4 sides for product that must stay level (non-standard sizes - tall pallets, packaged liquids)



Quick Mount Studs

- Stud design allows for easy installation with a drop in rail design that requires bolting at front and rearbeams only.



Quick Mount Plates

- Quick mount plates allow for more economical bundling and shipping of beams with a stiffer connection to the beams.



Multi Purpose Plate & Safety Stop

HEIGHT GAUGE

When loading a pallet, the Operator knows that if the load is high enough to clear the safety stop, then the pallet will not prematurely move the awaiting cart.

STRIP-OFF STOP

If, after placing a pallet, the operator has his forks in an improper tilt position, the safety stop will catch the bottom of the pallet and "strip" it off his forks.

END STOP

The safety stop, which is situated on the lowest cart and protrudes 3/4" above the highest cart, prevents pallets from shifting beyond the front load beam.

PUSH PLATE

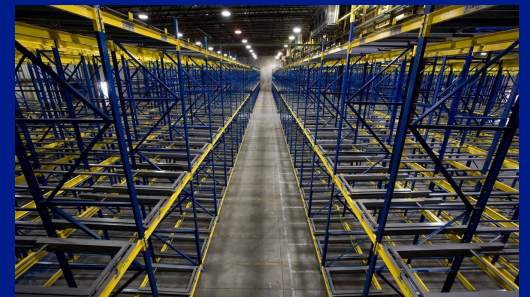
Pushing on the plate with the last pallet being inserted into the lane ensures proper placement on the rails.

LANE FULL INDICATOR

The operator can tell if a lane is full by the absence of the safety stop. If it is not showing at the front, the last cart has been loaded and there is a pallet on the rails - a full lane.

WHAT SIZE OF AISLE DO I REQUIRE?

Aisles should be sufficient to allow an operator to square up to the pallet without turning into the pushback rack. Usually this is typically 6" more than the truck manufacturers minimum aisle requirement.



Low Cost Installation

Our pushback rack design allows for easy installation, with wheels pre-installed at the factory and simple drop in rail design that requires rack attachment at the front and rear beams only.

Pushback Justification

The true cost per pallet stored includes all elements within the warehouse:

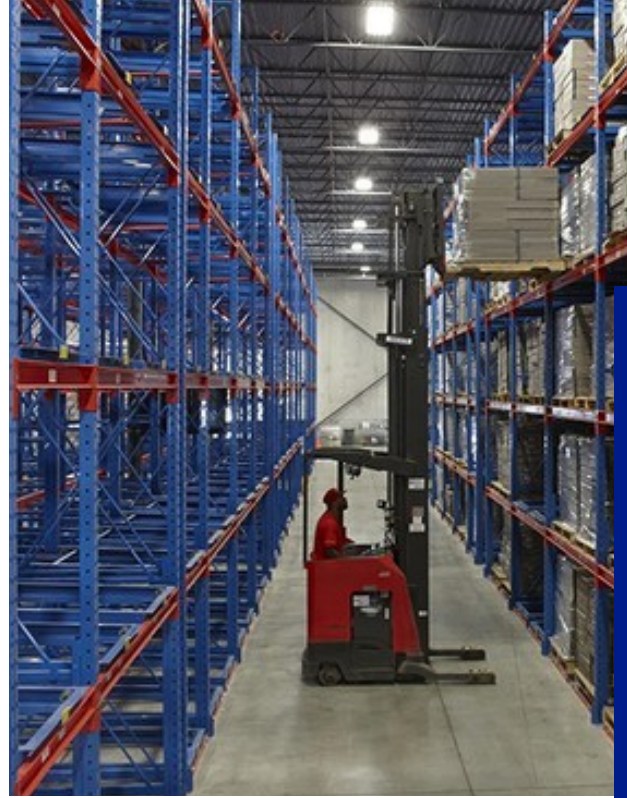
Capital Costs:

- Land
- Building
- Mobile Handling Equipment's (forklifts)
- Storage Systems

Operating Costs:

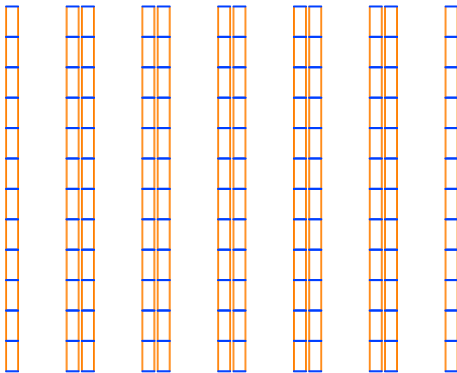
- Labour
- Transportation
- Product Damage
- Maintenance/Insurance/Taxes

Incorporating high density storage can help mitigate these costs by utilizing warehouse space more efficiently. Utilizing floor space for pallet storage, not drive aisles, allows end users to reduce operating costs per pallet position, and improve picking rate since lift equipment have access to more storage locations from a single aisle.



Our system solutions have been implemented in small warehouses and in large facilities exceeding one million square feet.

OUR PUSHBACK PALLET RACK SOLUTIONS ARE UNMATCHED.



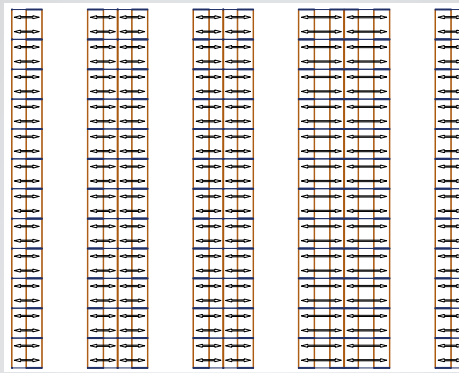
SCENARIO "A"
LOW DENSITY

Selective Pallet Rack

1,152 Pallet Positions

1,152 Pick Faces

Aisles use 60% of usable area



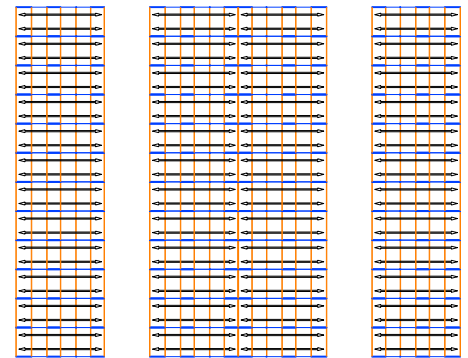
SCENARIO "B"
MEDIUM DENSITY

2 & 3 Deep Pushback

1,728 Pallet Positions (**50% more than "A"**)

768 Pick Faces

Aisles use 38% of usable area



SCENARIO "C"
HIGH DENSITY

6 Deep Pushback

2,304 Pallet Positions (**100% more than "A"**)

384 Pick Faces

Aisles use 19% of usable area

OUR STRENGTH IS OUR PRODUCT



Our Systems



RACKING SYSTEMS

Selective Pallet	Double Deep	Very Narrow Aisle
Drive In	Cantilver	Pushback
Pallet Flow	Carton Flow	Retail Fixture

SHELVING SYSTEMS

Open Steel	Closed Steel	Longspan
------------	--------------	----------

STORAGE PLATFORMS

Pick Tower	Shelf Supported	Structural Supported
------------	-----------------	----------------------

Services



- Racking Capacity Certification
- Quickship Rack Program
- Engineering and Rack Design
- Project Management
- Rack Installation
- Rack Relocation
- Material Handling and Product Solutions
- Safety and Racking
- Racking Inventory



Let's build something great

Not sure what you're looking for?
Call one of our experts today.

LET'S TALK.

1.800.735.4153

sales@naseco.ca



www.naseco.ca